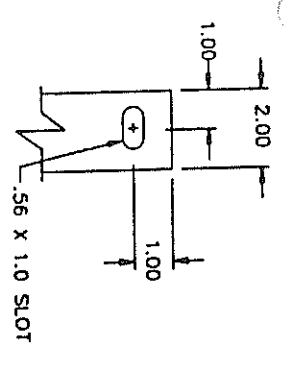
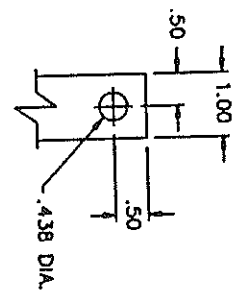


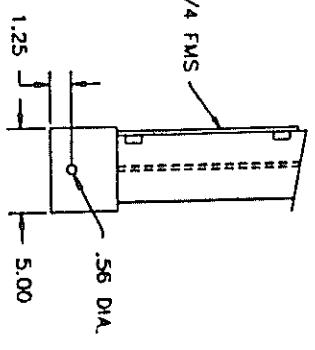
LV TERMINALS
0.25 x 5.00 CU
3 PER PHASE
0.25" SPACE BETWEEN BARS



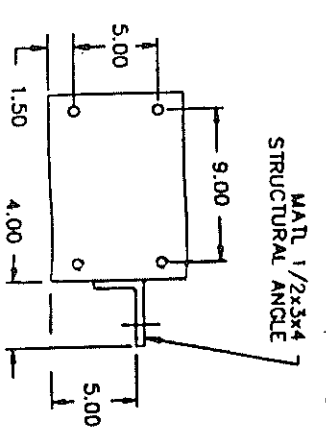
GROUND TERM.
.25 X 2.00 CU



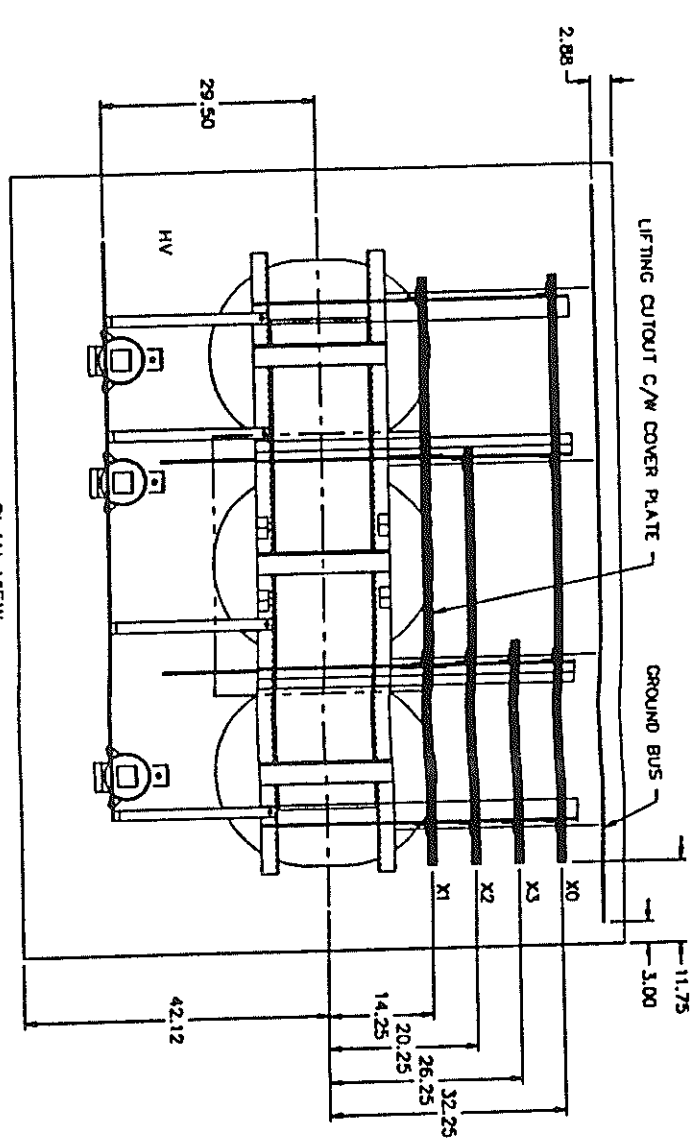
HV TERMINALS
.25 X 1.00 CU



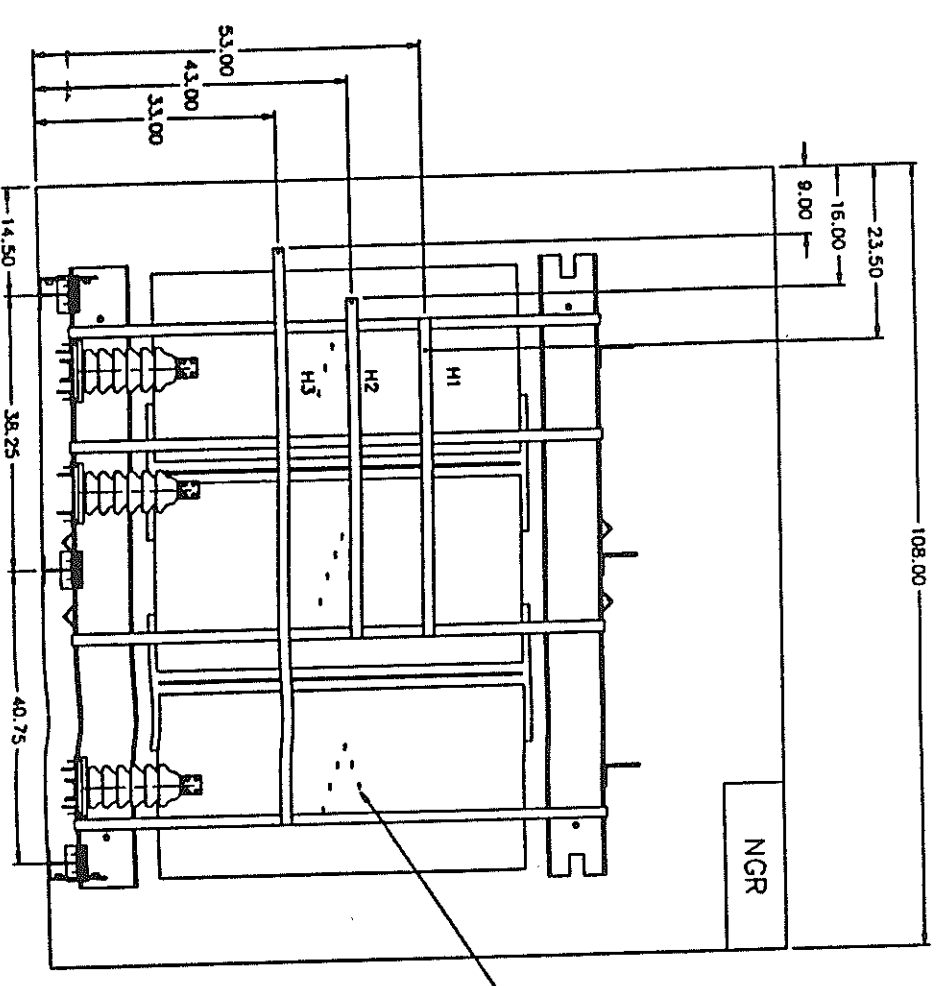
MATL 1/2x3/4
STRUCTURAL ANGLE



DETAIL "A"



PLAN VIEW



FRONT VIEW

LIGHTNING ARRESTORS

RIGHT SIDE VIEW

SEE DETAIL "A"

NOTE:
CORE & COIL FREESTANDING FROM ENCLOSURE
EACH SHIPPED INDIVIDUALLY

- C/W - COPPER WINDINGS AND BUS
- PLATED COPPER GROUND BUS
- (3) SPECIAL 6 KV LIGHTNING ARRESTORS
- DESIGNED FOR 4040W A.S.L. (ABB P/N R0068B005A)
- (3) 100 OHMS PLATINUM RTD, 1 PER COIL
- NEMA 1 VENTILATED ENCLOSURE, ANSI 61 GREY FINISH
- STAINLESS STEEL NAMEPLATE IN ENGLISH & RUSSIAN
- "DANGER HIGH VOLTAGE" LAMACOID NAMEPLATES IN ENGLISH & RUSSIAN
- 0.50" HIGH RED LETTERS ON WHITE BACKGROUND
- PROVISION FOR MASON S.F.C. 2550 SPRING ISOLATORS
- MULTILIN DIGITAL T53 THERMOMETER SEE EDB147345 SH2
- (1) CAN OF TOUCH UP PAINT FOR ENCLOSURE
- NGR SUPPLIED BY SCHNEIDER, INSTALLED & WIRED BY HAMMOND
- ILSCO AU3501 LUGS ON HV (2-350 MCA)

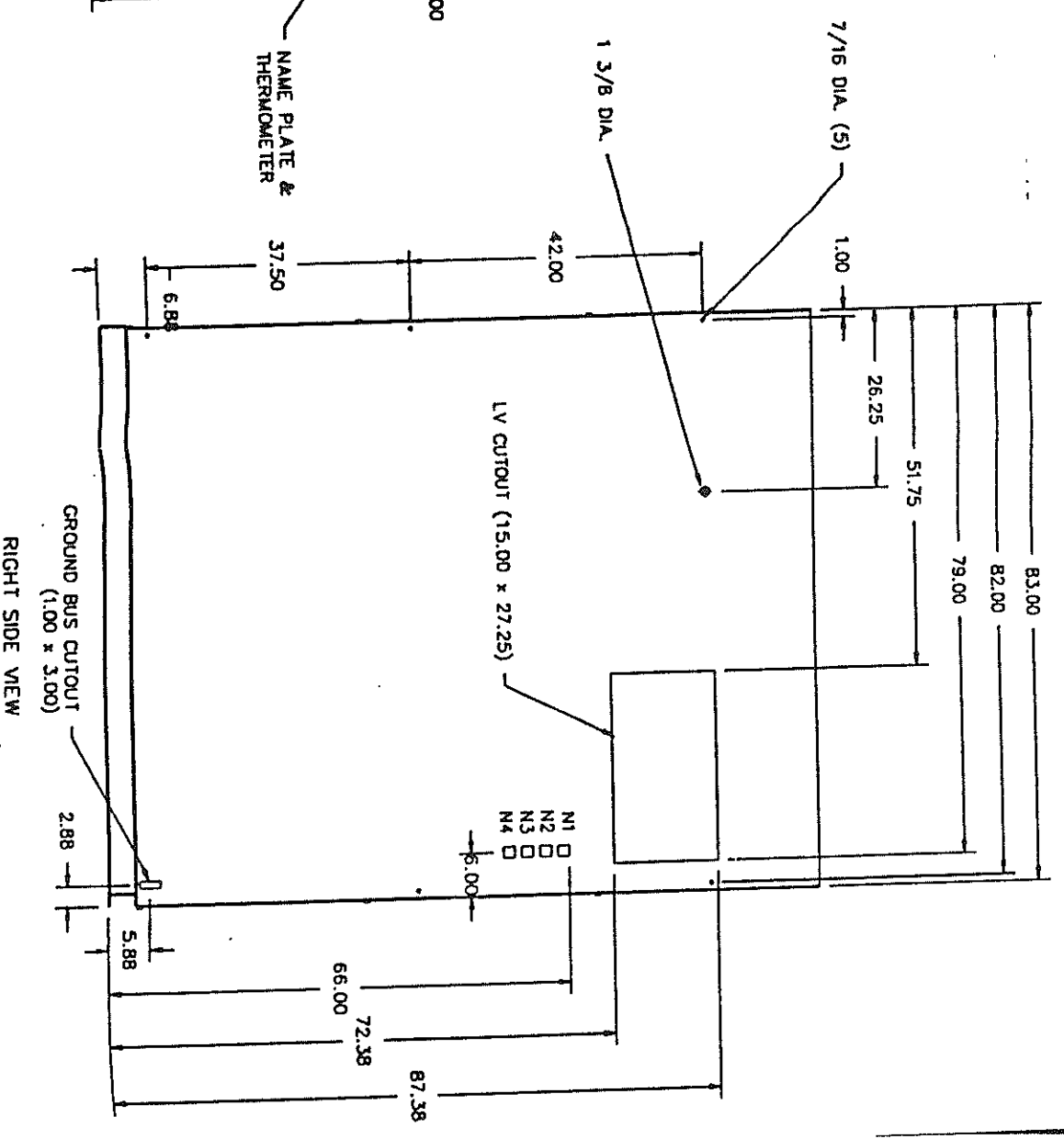
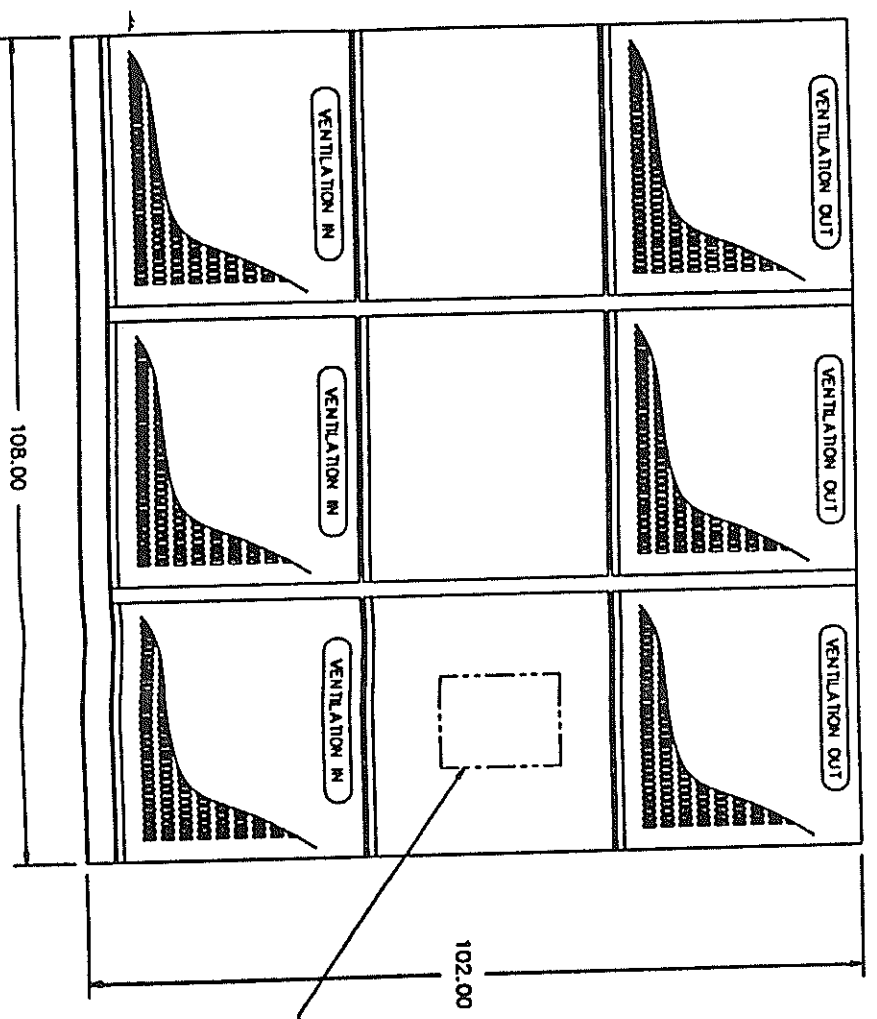
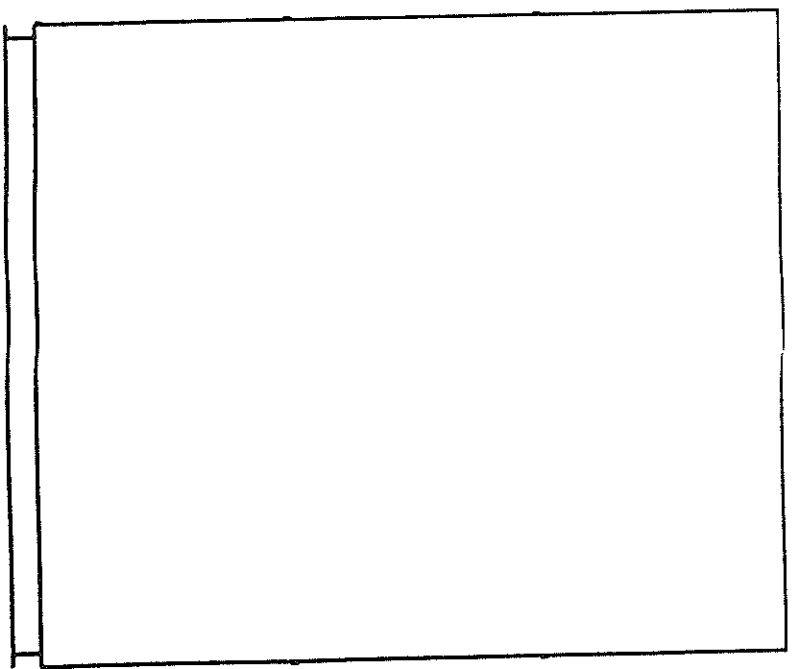
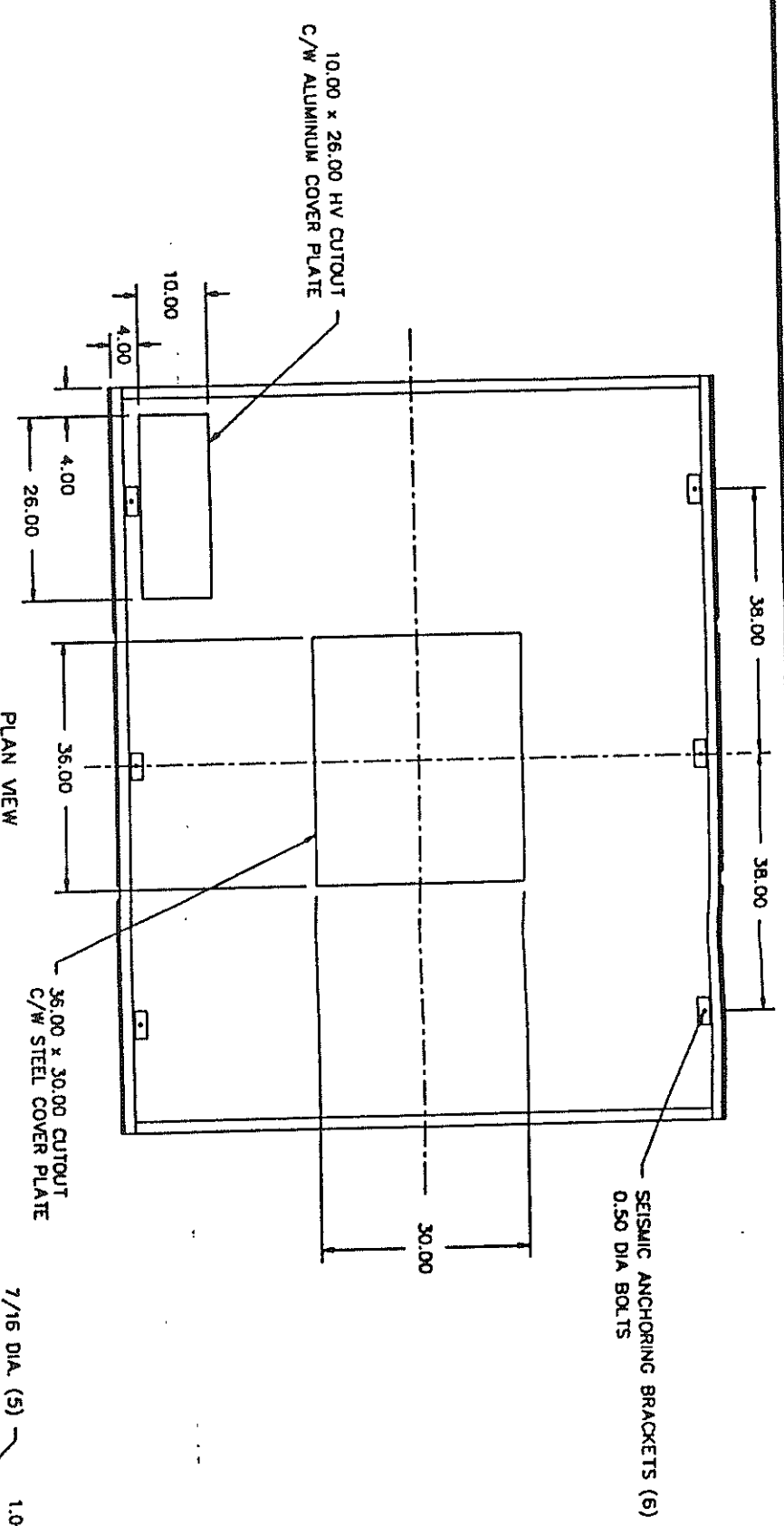
CUSTOMER NOTES
CUSTOMER: SCHNEIDER CANADA
CUSTOMER P.O.#: 54-85744.1.1
PREVIOUS CUSTOMER P.O.#: 54-85215.1.1
FOR ELECTRICAL CHARACTERISTICS
SEE NAMEPLATE DWG. EDB147345 SH1

EQUIPMENT NO.
332-6140-001
336-6140-002
336-6140-003
323-6140-004
323-6140-005
323-6140-006
325-6140-010
325-6140-011

TOLERANCES STD.	OTHER	REV. NO.	REVISION	DATE	REV. NO.	REVISION	DATE
±1/4"		6	FINAL REVISION AS BUILT	96-02-16	3	REVISED PER CUSTOMER	95-12-01
		5	HCN #5980; REVISED LV SUPPORTS	96-02-02	2	CHANGED TO PROVISIONS ON SPRING ISOLATORS & SNUBBERS	95-11-24
		4	HCN #5841; ADDED CAN OF TOUCH UP PAINT	95-12-20	1	REVISED PER CUSTOMER	95-11-22

Hammond Manufacturing Co. Ltd. Guelph Ontario Canada	
TITLE: TRANSFORMER OUTLINE	DWG. NO. B147345
3000 KVA FOR SCHNEIDER CANADA	SH 1 OF 2
REF.: KUMTOR GOLD PROJECT	

EQUIPMENT NO.
SEE SHEET # 1



TOLERANCES STD. OTHER		REV. NO.	HCN. NO.	DATE	REV. NO.	HCN. NO.	DATE	DES'D BY: D.B.		TITLE:	DWG. NO.
X = ±.1		1		95-12-01	4			DATE: 95-11-13		TRANSFORMER ENCLOSURE DETAIL	B147345
.XX = ±.05		2	REVISED PER CUSTOMER		5			CHK'D BY: R.V.		REF.: KUMTOR GOLD PROJECT	SH 2 OF 2
.XXX = ±.02		3			6			APP'D BY: R.V.			
ANGLES = ±0.5											

Hammond Manufacturing Co. Ltd. Guelph Ontario Canada